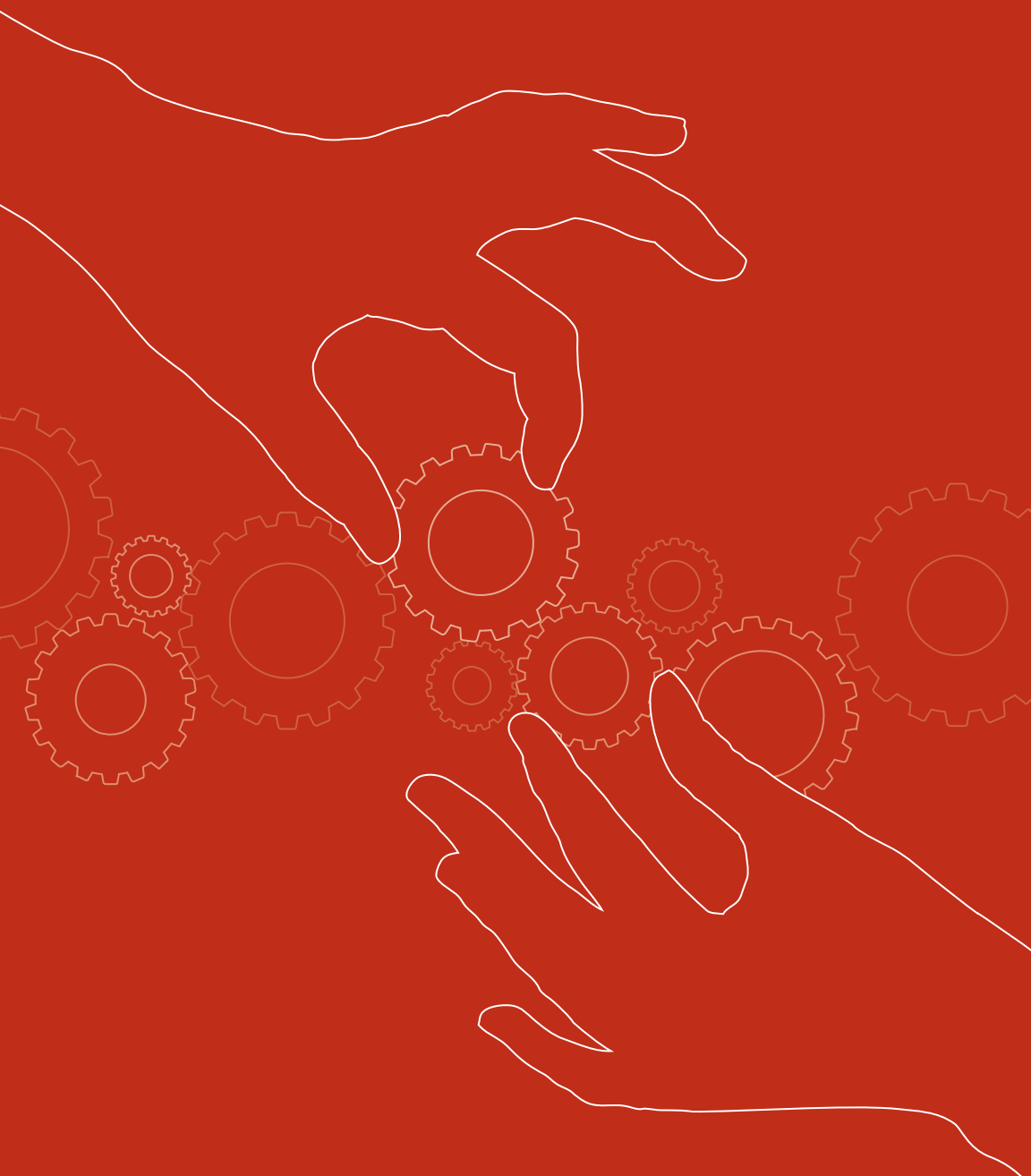


FY10: A YEAR IN REVIEW



COMMUNITY
INITIATIVES
IN SERVICE TO GREAT IDEAS

COMMUNITY INITIATIVES BELIEVES

THAT PEOPLE STARTING PROJECTS THAT **SERVE THE PUBLIC GOOD** SHOULDN'T ALSO HAVE TO BECOME EXPERTS ON TAXES, ACCOUNTING, AND HUMAN RESOURCES. EVERY DAY **WE PROVIDE** THE LEGAL FRAMEWORK AND QUALITY PROFESSIONAL **SUPPORT** THAT ALLOW NONPROFIT INITIATIVES **TO FLOURISH**. WE DO THIS BECAUSE OUR COMMUNITY **BENEFITS** WHEN LEADERS CAN **FOCUS** ON THEIR PROGRAMS, WITH CONFIDENCE THAT ADMINISTRATIVE TASKS ARE **WELL MANAGED**.

During FY10 (July 1, 2009, to June 30, 2010), while the nation remained gripped in stubborn economic recession and foundation grant-making budgets continued to decline, Community Initiatives held steady. We added 15 new projects, launched three others into their own 501(c)(3) organizations, and ended the year in the positive.

Firsts for Community Initiatives included a \$1 million federal stimulus grant (ARRA) to the **John Burton Foundation** for its **Homeless Youth Capacity Building Program** and our first national project, **The Council for Global Equality**, which, from its base in Washington, D.C., advocates for Lesbian Gay Bisexual Transgender equality and human rights internationally.

Rapid changes in the newspaper industry were reflected in two new nonprofit publishing ventures. **The Bay Citizen**, an online source of in-depth local news, has now received its own tax-exempt status. And, the local paper that connects the Japanese American community, *Nichi Bei Weekly*, has moved from for-profit to nonprofit status under the **Nichi Bei Foundation**.

Among our projects that serve philanthropy directly, this year we added **Bay Area Blacks in Philanthropy (BABIP)**, a membership organization that addresses the impact of racial disparity within philanthropic institutions.

Two of our ongoing projects had major accomplishments this year. **Laguna Honda Hospital Foundation** helped open the city's new state-of-the-art skilled nursing and rehabilitation center that is a national model. **San Francisco Hep B Free's** media campaign won a national award, as did its executive director, Janet Zola, who was honored as an "Unsung Hero of Public Health" by the CPH Foundation.

Please read about the important work of all of Community Initiatives' projects by viewing our website at www.communityin.org.


Cheryl Polk
Board Chair


M. Melanie Beene
President & CEO

FINANCIAL REPORT

Financial Report	2010 Total	2009 Total
Balance Sheet		
Assets	16,883,725	19,495,404
Liabilities	814,650	754,881
Net Assets:		
Unrestricted-CI Operations	1,254,905	1,207,367
Temporarily Restricted	14,814,170	17,533,156
TOTAL Liabilities and Net Assets	16,883,725	19,495,404
Statement of Activities		
Revenue and Support:		
Grants & Contributions	13,446,761	18,004,928
In-kind Contributions	1,105,916	898,183
Other Income	727,449	341,303
Interest Income	62,540	221,387
TOTAL Revenue & Support	15,342,666	19,465,801
Expenses:		
Program Services	16,177,587	13,722,126
Management & General	1,160,674	1,103,664
Fundraising	675,853	685,548
TOTAL Expenses	18,014,114	15,511,338
Change in Net Assets	(2,671,448)	3,954,463
Net Assets, beginning of year	18,740,523	14,786,060
Net Assets, end of year	16,069,075	18,740,523

Condensed audited financial information
for the years ended June 30, 2010 and 2009

A COMMUNITY OF SUPPORT

Community Initiatives is grateful for the 1,600+ gifts received in FY10, including the following institutional donations of \$2,500 and up.

Akonadi Foundation	City of East Palo Alto	HPS Development Company, LP	Ruby Skye	The Bernard A. Osher Trust	The Pew Charitable Trusts
Andrus Family Fund	City of Oakland	Irene S. Scully Family Foundation	S.D. Bechtel, Jr. Foundation	The California Endowment	The Safeway Foundation
Arup North American Ltd.	County of Alameda	Jewish Community Endowment Fund	S.H. Cowell Foundation	The California Wellness Foundation	The San Francisco Foundation
Asian Americans/Pacific Islanders in Philanthropy	County of San Mateo	John S. & James L. Knight Foundation	San Francisco Arts Commission	The Capital Group Companies Charitable Foundation	The SHS Foundation
Association of Asian/Pacific Community Health Organizations	CP Development Company, LP	Kaiser Permanente	San Francisco Community Challenge Grant Program	The Christensen Fund	The Stanley S. Langendorf Foundation
AT&T California	East Bay Community Foundation	Latino Community Foundation	San Francisco Department of Children, Youth and Their Families	The David & Lucile Packard Foundation	The Whitman Institute
AT&T Foundation	Ernest Gallo Foundation	Lisa and Douglas Goldman Fund	San Francisco Department of Public Health	The David B. Gold Foundation	The William & Flora Hewlett Foundation
B & N Industries	Evelyn and Walter Haas Jr. Fund	Local Initiatives Support Corporation	San Francisco Mayor's Office of Community Investment	The Dickler Family Foundation	The Women's Foundation
Bank of America	First 5 Contra Costa	Louis R. Lurie Foundation	San Francisco Office of Economic and Workforce Development	The Friend Family Foundation	The Zenith Insurance Company
Bella Vista Foundation	First 5 San Francisco	MAG Management, Inc.	Schwab Charitable Fund	The George & Judy Marcus Family Foundation	Townsend Raimundo Besler & Usher, Inc.
Bill Graham Supporting Foundation	First 5 Santa Clara County	Marguerite Casey Foundation	Seneca Residential & Day Treatment Center, Inc.	The Grove Foundation	Trio Foundation
Birth to Five Policy Alliance	First Place for Youth	Marin Community Foundation	Seva Foundation	The Henry Mayo Newhall Foundation	U.S. Department of Health and Human Services, Strengthening Communities Fund (ARRA)
Blue Shield of California	Five Bridges Foundation	MDP Foundation	Seventh Generation Fund	The J.P. Morgan Chase Foundation	Unbound Philanthropy
Blum Family Foundation	Ford Foundation	Mimi and Peter Haas Fund	Silicon Valley Community Foundation	The James Irvine Foundation	Union Bank of California
Boehringer Ingelheim USA Corporation	Frank & Denise Quattrone Foundation	Miranda Lux Foundation	Silver Giving Foundation	The John and Lisa Pritzker Family Fund	United Way of the Bay Area
Bring Me A Book Foundation	Funding Exchange	Morning Glory Family Foundation	Single Stop USA, Inc.	The Joy & Rose Phillips Family Foundation	van Löben Sels/ RembeRock Foundation
Bristol-Myers Squibb Company	Gap Inc.	Nehemiah Corporation of America	South County Community Health Center	The Kanbar Charitable Trust	Viragh Family Foundation
Brooks-Mathews Foundation	Genentech, Inc.	Open Society Institute	Stewardship Council	The Kimball Foundation	Visa U.S.A. Inc.
California Community Foundation	Gilead Sciences, Inc.	Palo Alto Weekly Holiday Fund	Stuart Foundation	The Mitchell Kapur Foundation	W.K. Kellogg Foundation
California Dental Association	GlaxoSmithKline	Participant Media, LLC	Surdna Foundation, Inc.	The Morris Stulsaft Foundation	Wallace Global Fund
Carnegie Corporation of New York	Grants for the Arts/ San Francisco Hotel Tax Fund	PG&E Corporation Fund	Swinerton Incorporated	The Mortar Foundation, Inc.	Wallis Foundation
Casey Family Programs	Hanna, Brophy, MacLean, McAleer & Jensen LLP	Ping and Amy Chao Family Foundation	The Alliance for Children's Rights	The Nick Traina Foundation	Walter & Elise Haas Fund
Catholic Campaign for Human Development	Hanson Bridgett LLP	Robert & Catherine Miller Charitable Foundation	The Atlantic Philanthropies	The PG&E Corporation Foundation	Walter S. Johnson Foundation
Charles & Helen Schwab Family Foundation	Hawai'i Community Foundation		The Bamford Foundation		Webcor Construction, Inc.
Cisco Systems Foundation	Health Net, Inc.		The Bank of America Charitable Foundation, Inc.		Wells Fargo Foundation
City of Berkeley	Hellman Family Foundation				YMCA of San Francisco
	Housing Authority of City & County of San Francisco				Zellerbach Family Fund
					Zerodivide
					Zobha, LLC

PROJECTS SPONSORED BY COMMUNITY INITIATIVES

From July 1, 2009 to November 30, 2010

Total Projects – 95

New in FY10 and new to date in FY11 – 20 projects (Black)

Projects that have completed, closed, transferred – 9 (Gray)

Projects that became 501(c)(3) organizations – 3 (Red)

Active Voice	Bay Area Science Education Consortium	Center for Strategic Community Innovation	Excelsior Action Group/ Ocean Avenue Revitalization Collaborative/Portola Neighborhood Steering Committee	Nichi Bei Foundation	Take Out Until Completely Healed (TOUCH)
Adopted and Fostered Adults of the African Diaspora (AFAAD)	Berkeley City College Bridge to Biotech Careers	Center for Youth Wellness	Eva Soltes Performance & Media Arts	North American Primate Sanctuary Alliance	Teachers 4 Social Justice
Alameda County Foster Youth Alliance	Building Elder Strength Today (BEST) Fund of The Atlantic Philanthropies	Chalice Consort	First 5 San Francisco (Parent Action Group)	Nuestra Casa	Teaching Artists Organized
Arthur H. Coleman Community Health Foundation	Business Council on Climate Change	Cities21.org	Global Citizen Fund	Om Organics	The Bay Citizen
Arts Education Funders Collaborative	California Connected by 25 Initiative	College Dream Team Project	Global School Room	Open Source Digital Voting Foundation	The Democracy Center
Asia and Pacific Alliance to Eliminate Viral Hepatitis (APAVH)	California Family Resource Association	Communities of Opportunity	Harding Theater Collaborative	Parent Advisory Council	The Voices of Our Nations Arts Foundation
At The Crossroads	California Legislative Program	Community Experience Partnership	Headstand: Yoga Goes to School	Pars Equality Center	Threshold 2009
BANDTEC	California Small Business Forum	Council for Global Equality	Honoring Sacred Space Campaign	Preschool California	Tiny House Project
Bay Area Blacks In Philanthropy	Campaign for Better Nutrition	Culturally Effective Healthcare Development Project at Laguna Honda	Honoring Sacred Space Restoration Project	Projects S.O.Y. (Save Our Youth)	Very Public Artworks
Bay Area Collaborative of American Indian Resources (BACAIR)	Castro Area Planning + Action	Diabetes Hands Foundation	Infant Toddler Consortium	Promoting Contemporary African Art in America	Visitacion Valley Business Improvement Group (VVBIG)
Bay Area Disc Association	Center for Adults with Congenital Heart Disease	Do a Little Foundation	Intertribal Friendship House	Protecting Class Action Settlement Funds	Volunteerism Project Fund
Bay Area Immigrant Rights Coalition		Early Childhood Funders	John Burton Foundation for Children Without Homes	Restorative Justice for Oakland Youth (RJOY)	Walker/Hupp Foundation
		Endangered Species	Laguna Honda Foundation	San Francisco Community Agencies Responding to Disaster (SF CARD)	Walter S. Johnson Foundation/Special Projects
		Engage Her, Inc.	Lieder Alive!	San Francisco Dyke March	WARD 76
		eQuality Scholarship Collaborative	Life on Wheels	San Francisco Family Support Alignment Project	West Marin Fund
			Media Enterprise Alliance	San Francisco Food Systems Council	Youth Spirit Artworks
			Mission Dignity	San Francisco Hep B Free	
			Mission Science Workshop	San Francisco Human Services Network	
			Model City Policy Project	SF-Zurich Initiative	
			Neeki Foundation	SMILE Science U.S.	

COMMUNITY INITIATIVES

IN SERVICE TO GREAT IDEAS

Board Members and Officers

Cheryl Polk, Chair
Foundation executive

Frances Phillips, Treasurer
Foundation program director and
former nonprofit executive

Gene Takagi, Secretary
Nonprofit attorney

Sarah Bacon
Product manager for an internet
company

Alison Fong
Financial analyst

Janine Guillot
Chief operating investment officer
of a public pension plan

Rick Mariano
Real estate developer

Jenny Pearlman
Nonprofit consultant

Ruth Williams
Foundation program officer and
former nonprofit executive

AUDITOR: Harrington Group LLP

COMMUNICATIONS COUNSEL:
Mission Minded, www.mission-minded.com

Community Initiatives Staff

James Ball
Director of Financial Services

M. Melanie Beene
President and CEO

Chris Heinold
Payroll and Accounts Payable Specialist

Prudy Kohler
Director of Fiscally Sponsored Project
and Philanthropic Services

Vince Peñuela
Accountant (until 11/10)

Ani Rivera
Compliance Specialist

Susan Scarborough
Director of Human Resources and
Administration

MiChele Starling
Human Resources Assistant/Office
Coordinator (beginning 9/10)

LEGAL COUNSEL: Adler & Colvin

TECHNOLOGY CONSULTANTS:
InfniIT Consulting

Community Initiatives is a steering committee member of the National Network of Fiscal Sponsors and follows its best practice guidelines for fiscal sponsorship.